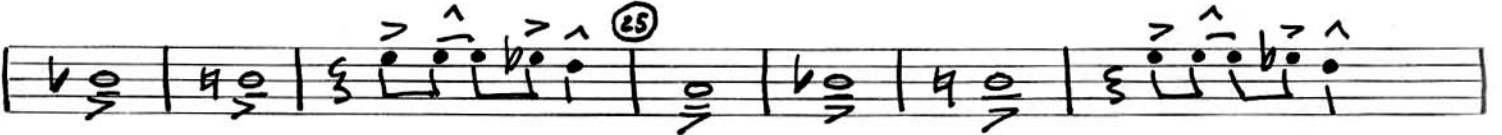


(Transcribed by J. Gilbert jgilb@videotron.ca)

WOLVERINE BLUES

(CHIAROSCURO RECORDS CR161)

BOBBY HACKETT



C Ebdim G7 C Ebdim G7
 C Ebdim G Bbdim D7 G7
 ⑨ C Ebdim G7 C Ebdim G7 C7
 F D7 G7 C Ebdim G7 ⑩ C6
 C#dim G7 G7 D9 G7 C6
 C#dim G7 G7 D9 G7 ⑫ C7
 F F F7 D7 D9
 D7 F7 C
 ⑬
 ⑭
 ⑮
 ⑯

Handwritten musical notation on a single staff. It begins with a treble clef and a key signature of one sharp (F#). The notation includes eighth and sixteenth notes, many with accents (^) and slurs. A circled measure number '25' is placed above the staff. The piece concludes with a double bar line.

Handwritten musical notation on a single staff, continuing the piece. It features eighth and sixteenth notes with accents and slurs. The notation is dense and rhythmic.

Handwritten musical notation on a single staff. It shows a transition with a 3/2 time signature and a 3/2 measure. The notation includes eighth and sixteenth notes.

Handwritten musical notation on a single staff. It features a key signature change to two sharps (F# and C#). The notation includes eighth and sixteenth notes with accents and slurs.

Handwritten musical notation on a single staff. It includes a circled measure number '9' and a circled measure number '17'. The notation features eighth and sixteenth notes with accents and slurs.

Handwritten musical notation on a single staff. It shows a 3/2 time signature and a 3/2 measure. The notation includes eighth and sixteenth notes with accents and slurs.

Handwritten musical notation on a single staff, starting with a circled measure number '25'. The notation includes eighth and sixteenth notes with accents and slurs.

Handwritten musical notation on a single staff, featuring eighth and sixteenth notes with accents and slurs. The notation is rhythmic and melodic.

Handwritten musical notation on a single staff, including a circled measure number '25' and a key signature change to two sharps (F# and C#). The notation includes eighth and sixteenth notes with accents and slurs.

Handwritten musical notation on a single staff, ending with the text 'rit (a el lib)'. The notation includes eighth and sixteenth notes with accents and slurs.

Two empty musical staves.

Two empty musical staves.