

Warm Up

by nicola orioli



esercizio n.1 / exercise n.1

suoni armonici / sons harmoniques

Un esercizio per trovare un'intonazione interiore".

Un exercice pour trouver une "justesse interieure".

Sempre calmo e tranquillo.

Toujour calme et tranquille.

.10 SAXOPHONE

The image shows a musical score for saxophone exercise n.1. It consists of two staves of music in 2/4 time, starting with a key signature of one flat (Bb). The first staff begins with a treble clef and a key signature change to one flat. The second staff begins with a bass clef and a key signature change to one flat. The score includes notes, rests, and fingerings. Below the notes, there are diagrams of saxophone fingerings for various notes, labeled with 'p' (piano), 'C', 'Bb', 'B', and 'C#'. The first staff has fingerings for notes: C (piano), Bb, C, Bb, B, C, B, C, C#. The second staff has fingerings for notes: Bb, C, Bb, B, C, B, C, C#.

esercizio n.2 / exercise n.2

lingua / langue

con metronomo tra 80 e 108

avec metronome entre 80 et 108

sempre legato-staccato “da-da”

toujour liée-détaché “da-da”

la nota di partenza e' G

la note du depart est G

le note successive si allontanano di mezzo tono nei due sensi verso l'acuto e verso il grave.

les notes suivantes s' éloignent par demi-ton dans le deux sens vers l'aigu et vers le grave

la sequenza e' : G G# F# A F Bb E B Eb C D C#

la sequence est : G G# F# A F Bb E B Eb C D C#



etc.....

esercizio n.3 / exercise n.3

mano sinistra / main gauche

rapido

vite



esercizio n.4 / exercise n.4

mano destra / main droite

rapido

vite



esercizio n.5 / exercise n.5

dita / doigts

un esercizio per le dita.

Un exercise pour les doigts.

Trasportare seguendo la serie (dodecafonica) dell'esercizio n.2 G G# F# A F Bb E
B Eb C D C#

Transposer en suivant la serie (dodecaphonique) de l'exercice n. 2 G G# F# A F Bb E B
Eb C D C#

Metronomo da 120 a 150

Metronome de 120 a 150



esercizio n.6 / exercise n.6

ottave / octaves

lento

lent

Musical notation for exercise n.6. It consists of three staves in treble clef with a common time signature. The first two staves are marked 'OPHONE' and contain a sequence of eighth notes: G4, G#4, F#4, A4, F4, Bb4, E4, B4, Eb4, C4, D4, C#4. The third staff shows the same sequence of notes with a slur over the first two notes and another slur over the last two notes. The number '12' is written below the first staff.

esercizio n.7 / exercise n.7

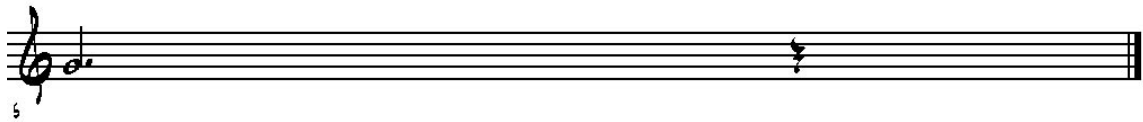
staccato / détaché

sempre **da-da**

toujour **da-da**

seguire la serie **G G# F# A F Bb E B Eb C D C#**

suivre la serie **G G# F# A F Bb E B Eb C D C#**



esercizio n.8 / exercise n.8

cromatico / chromatique

rapido

vite

seguire la serie **G G# F# A F Bb E B Eb C D C#**

suivre la serie **G G# F# A F Bb E B Eb C D C#**

